



# BRIO-I Slim

Fan coil with tangential fan  
and EC electronic motor

UNFORGETTABLE  
COMFORT



## Slim

With its slim and exclusive design and simple and essential shape, BRIO-I Slim furnishes the environment with a discreet touch of elegance.



# BRIO-I Slim



A simple and easy concept to remember, like a wonderful experience that leaves a distinctive memory.

BRIO-I Slim is simple and memorable for its design, silence, comfort, low consumption and user experience.

A product designed from the future.

## Multi-form

**Flexible** versions with a cabinet and recessed, wall-supported formwork or false ceiling installation, BRIO-I Slim **structures any architectural requirement.**

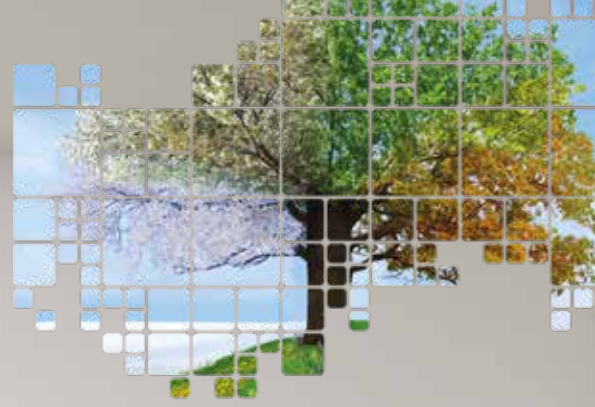
## Unparalleled silence

**Barely audible** when operating at low speed and efficient when required, **with continuous modulation** at skilfully controlled speed, BRIO-I Slim **can provide the right day and night comfort without ever being heard.**



## Low consumption

The EC electronic motor compresses consumption to extremely low values and enables **constant performance control** with advanced logic **based on actual room requirements, without any waste.**



## With touch control

The **intuitive touch control** makes the control unit extremely easy to use: the wall-mounted control panel responds immediately to the commands **with a simple touch.**

## Radiant heat

The radiant function creates a pleasant sense of **well-being** through heat distributed from the front panel, which heats **during winter operation.**





| BRIO-I SLIM - MVP-MVR-IXP-IVR                                   |         |         | 10       | 20       | 25       | 30       | 40       |
|---|---------|---------|----------|----------|----------|----------|----------|
| ❶ Total cooling capacity  | MAX     | kW      | 0,99     | 1,83     | 2,89     | 3,34     | 3,98     |
|   | MED     | kW      | 0,76     | 1,35     | 2,17     | 2,44     | 2,91     |
|   | MIN     | kW      | 0,39     | 0,73     | 1,15     | 1,27     | 1,47     |
| ❶ Total cooling capacity [EN1397]                               | MAX     | kW E    | 0,98     | 1,81     | 2,87     | 3,31     | 3,94     |
|   | MED     | kW E    | 0,75     | 1,35     | 2,16     | 2,43     | 2,9      |
|   | MIN     | kW E    | 0,38     | 0,73     | 1,14     | 1,27     | 1,46     |
| ❷ Heating capacity (45°C) [EN1397]                              | MAX     | kW E    | 1,13     | 2,03     | 3,19     | 3,75     | 4,57     |
|   | MED     | kW E    | 0,81     | 1,48     | 2,32     | 2,75     | 3,19     |
|   | MIN     | kW E    | 0,57     | 0,75     | 0,92     | 1,48     | 1,84     |
| ❸ Heating capacity (50°C)                                       | MAX     | kW      | 1,38     | 2,48     | 3,91     | 4,59     | 5,57     |
|   | MED     | kW      | 0,99     | 1,8      | 2,84     | 3,35     | 3,89     |
|   | MIN     | kW      | 0,7      | 0,92     | 1,11     | 1,8      | 2,24     |
| ❹ Heating capacity (70°C) [EN1397]                              | MAX     | kW      | 2,27     | 4,08     | 6,41     | 7,54     | 9,17     |
|   | MED     | kW      | 1,63     | 2,98     | 4,67     | 5,52     | 6,42     |
|   | MIN     | kW      | 1,16     | 1,54     | 1,84     | 2,97     | 3,7      |
| ❺ Heating capacity only radiant function (50°C) MVR-IVR version |         | kW      | 0,32     | 0,38     | 0,46     | 0,55     | 0,66     |
| ❹ Heating capacity only radiant function (70°C) MVR-IVR version |         | kW      | 0,54     | 0,67     | 0,78     | 0,92     | 1,08     |
| ❻ Heating capacity of additional coil (65°C) [EN1397]           | MAX     | kW E    | 0,67     | 1,21     | 1,76     | 2,3      | 2,84     |
|   | MED     | kW E    | 0,56     | 0,97     | 1,27     | 1,81     | 2,3      |
|   | MIN     | kW E    | 0,33     | 0,69     | 0,95     | 1,31     | 1,45     |
| ❼ Heating capacity of additional coil (70°C)                    | MAX     | kW      | 0,77     | 1,42     | 2,16     | 2,74     | 3,3      |
|   | MED     | kW      | 0,63     | 1,15     | 1,55     | 2,18     | 2,7      |
|   | MIN     | kW      | 0,36     | 0,8      | 1,12     | 1,58     | 1,71     |
| Air flow speed  | MAX     | m³/h    | 162      | 320      | 461      | 576      | 648      |
|   | MED     | m³/h    | 113      | 252      | 367      | 453      | 494      |
|   | MIN     | m³/h    | 55       | 155      | 248      | 370      | 426      |
| Sound power   | MAX     | dB(A) E | 50       | 51       | 52       | 54       | 54       |
|   | MED     | dB(A) E | 42       | 43       | 45       | 46       | 46       |
|   | MIN     | dB(A) E | 32       | 33       | 34       | 35       | 34       |
| ❻ Sound pressure  | MAX     | dB(A)   | 41       | 42       | 43       | 45       | 45       |
|   | MED     | dB(A)   | 33       | 34       | 36       | 37       | 37       |
|   | MIN     | dB(A)   | 23       | 24       | 25       | 26       | 25       |
| Absorbed power  | MAX     | W E     | 11       | 19       | 20       | 28       | 35       |
|   | MED     | W E     | 9        | 10       | 13       | 15       | 17       |
|   | MIN     | W E     | 7        | 7        | 7        | 8        | 8        |
| Electrical supply   | V-ph-Hz |         | 230-1-50 | 230-1-50 | 230-1-50 | 230-1-50 | 230-1-50 |

| DIMENSIONS AND WEIGHTS                   |    |  | 10          | 20          | 25           | 30           | 40           |
|--|----|--|-------------|-------------|--------------|--------------|--------------|
| W - MVP-MVR width                        | mm |  | 723         | 923         | 1123         | 1323         | 1523         |
| W - IXP-IVR width                        | mm |  | 525         | 725         | 925          | 1125         | 1325         |
| H - MVP-MVR height - 2 pipes             | mm |  | 579         | 579         | 579          | 579          | 579          |
| H - IXP-IVR height - 2 pipes             | mm |  | 590         | 590         | 590          | 590          | 590          |
| H - MVP height - 4 pipes                 | mm |  | 639         | 639         | 639          | 639          | 639          |
| H - IXP height - 4 pipes                 | mm |  | 650         | 650         | 650          | 650          | 650          |
| Feet height /minimum height from floor   | mm |  | 80          | 80          | 80           | 80           | 80           |
| D - MVP-MVR depth                        | mm |  | 149         | 149         | 149          | 149          | 149          |
| D - IXP-IVR depth                        | mm |  | 126         | 126         | 126          | 126          | 126          |
| MVP-MVR weight - 2 pipes / MVP- 4 pipes  | kg |  | 17 / 18     | 20 / 21     | 23 / 25      | 26 / 28      | 29 / 32      |
| IXP-IVR weight - 2 pipes / IXP - 4 pipes | kg |  | 9 / 10      | 12 / 13     | 15 / 17      | 18 / 20      | 21 / 24      |
| LxHxP - KCASE formwork - 2 pipes         | mm |  | 715x725x142 | 915x725x142 | 1115x725x142 | 1315x725x142 | 1515x725x142 |

Data at the following conditions:

- ❶ Air: 27°C D.B.; 19°C W.B. - Water: 7/12°C.
- ❷ Air: 20°C - Water: 45/40°C.
- ❸ Air: 20°C - Water: 50°C, flow rate as in cooling.
- ❹ Air: 20°C - Water: 70/60°C.
- ❺ Air: 20°C - Water: 65/55°C.
- ❻ For room volume equal to 100 m³ and reverberation time = 0.5 sec.
- E Eurovent certified performance.



RHOSS S.P.A.  
Via Oltre Ferrovia, 32 - 33033 Codroipo (UD) - Italy  
tel. +39 0432 911611 - fax +39 0432 911600  
rhoss@rhoss.it - www.rhoss.it - www.rhoss.com

IR GROUP SARL  
19, chemin de la Plaine - 69390 Vourles - France  
tél. +33 (0)4 72 31 86 31 - fax +33 (0)4 72 31 86 30  
exportsales@rhoss.it

RHOSS Deutschland GmbH  
Hölzlestraße 23, D-72336 Balingen, OT Engstlatt - Germany  
tel. +49 (0)7433 260270 - fax +49 (0)7433 260270  
info@rhoss.de - www.rhoss.de



## Versions

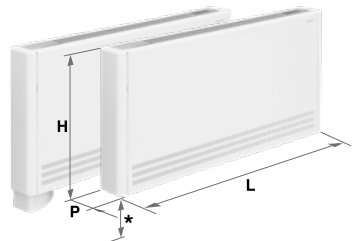
**MVP** vertical version with cabinet for 2 and 4-pipe systems.

**MVR** vertical version with cabinet and radiant function.

**IXP** horizontal/vertical recessed version for 2 and 4-pipe systems.

**IVR** vertical recessed version with radiant function.

MVP-MVR for vertical installation

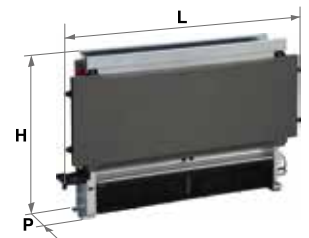


MVP-MVR+feet \* distance from the ground

For horizontal installation



IXP for vertical and horizontal installation  
IVR for vertical installation



IXP-IVR with KCASE formwork and covering panel



RHOSS GULF JLT  
Suite No: 3004, Platinum Tower  
Jumeirah Lakes Towers, Dubai - UAE  
ph. +971 4 44 12 154 - fax +971 4 44 10 581  
e-mail: info@rhossgulf.com

Italy Sales Departments:  
Codroipo (UD)  
33033 Via Oltre Ferrovia, 32  
tel. +39 0432 911611 - fax +39 0432 911600

Nova Milanese (MB)  
20834 Via Venezia, 2 - p. 2  
tel. +39 039 6898394 - fax +39 039 6898395