

FAN COILS

Comfort in the air



Floor and ceiling fan coils for
recessed wall or false ceiling
and ducted installation



NIBE GROUP MEMBER

Comfort in the air



SYS-TO
PLANT MANAGEMENT SYSTEM

SLIM-Touch Controls

LIT-Touch Controls

PAGE

22

18

20

FAN COILS

Fan coils with EC motor
BRIO-I SLIM
Cooling capacity: 1.0-4.0 kW - Heating capacity: 1.4-5.5 kW

SLIM-Touch

4

Fan coils with EC motor
YARDY-I EV3
Cooling capacity: 1.9-8.4 kW - Heating capacity: 2.5-11.8 kW

6

Fan coils
YARDY EV3
Cooling capacity: 1.0-8.3 kW - Heating capacity: 1.4-11.7 kW

6

Ducted fan coils with EC motor
YARDY-ID2
Cooling capacity: 3.0-6.3 kW - Heating capacity: 3.9-8.7 kW

8

Ducted fan coils
YARDY-DUCT2
Cooling capacity: 1.9-5.7 kW - Heating capacity: 2.4-7.2 kW

LIT-Touch

8

Ductable terminals
YARDY-HP
Cooling capacity: 7.0-19.8 kW - Heating capacity: 9.9-29.6 kW

8

Cassette fan coils with EC motor
DIVA-I
Cooling capacity: 2.7-10.7 kW - Heating capacity: 3.4-12.7 kW

10

Cassette fan coils
DIVA
Cooling capacity: 1.9-10.9 kW - Heating capacity: 2.6-14.0 kW

10

Wall mounted fan coils with EC motor
IDROWALL-I
IDROWALL-I/V3
Cooling capacity: 2.2-4.3 kW - Heating capacity: 2.4-5.1 kW

12





1 kW 4

1,4 kW 5,5

1,9 kW 8,4

2,5 kW 11,8

1 kW 8,3

1,4 kW 11,7

3 kW 6,3

3,9 kW 8,7

1,9 kW 5,7

2,4 kW 7,2

7 kW 19,8

9,9 kW 29,6

2,7 kW 10,7

3,4 kW 12,7

1,9 kW 10,9

2,6 kW 14

2,2 kW 4,3

2,4 kW 5,1

**Efficiency, design
and low consumption**

BRIO-I Slim

Floor and ceiling fan coils for recessed wall or false ceiling installation

BRIO-I Slim is simple and memorable for its design, silence, comfort, low consumption and user experience. A product designed from the future.



Slim

With its slim and exclusive design and simple and essential shape, BRIO-I Slim furnishes the environment with a touch of discreet elegance.



Unparalleled silence

Barely audible when operating at low speed and efficient when required, with continuous modulation at skilfully controlled speed, BRIO-I Slim can provide the right day and night comfort without ever being heard.



Low consumption

The EC electronic motor compresses consumption to extremely low values and enables constant performance control with advanced logic based on actual room requirements, without any waste.



With touch control

The intuitive touch control makes the control unit extremely easy to use: the wall-mounted control panel responds immediately to the commands with a simple touch.



Radiant heating

The radiant function creates a pleasant sense of well-being through heat distributed from the front panel, which heats during winter operation.



Multi-shapes

Flexible versions with a cabinet and recessed, wall-supported formwork or false ceiling installation, BRIO-I Slim structures any architectural requirement.



Wall mounted SLIM-Touch panel



KCASE formwork
KPCASED covering panel
KGMD delivery nozzle
KRTMI telescopic fitting

MVP-MVR for vertical installation



MVP-MVR+feet

MVP+KVXO for horizontal installation



IXP for vertical and horizontal installation
IVR for vertical installation



IXP-IVR with KCASE formwork and
KPCASEV cover panel



YARDY

Floor and ceiling fan coils for recessed wall or false ceiling installation

A range that is designed with the aim of improving the quality of the internal environment, through climate control, sound levels and air quality (IAQ) with innovative solutions, such as the Air'Suite® biocide filter.



Sensational silence

Also suitable for relaxation and rest areas, Yardy fan coils are designed to provide unparalleled acoustic comfort: the careful aerodynamic design makes them barely audible when operating.



Air'Suite® filters

The Air'Suite® biocide filter is an exclusive wide-spectrum filtration system capable of breaking down microbiological contamination.

Air'Suite® filters the room air, making it healthy and clean, and breaks down microbiological agents, such as bacteria, mould and viruses, reaching a new IAQ standard (Indoor Air Quality) for indoor comfort.



Touch control

LIT-Touch is the control platform for fan coils, completely renewed to improve the user's experience.

The touch panel, with its unique and innovative design, adapts to any furnishing requirement thanks to the two colour options: glossy black or pearl white.



Full savings with EC motors

The ranges are available in versions with an AC motor and EC brushless motor, which reduces consumption to over 50% compared to a traditional motor.

YARDY-I EV3

Brushless Inverter Motor.

YARDY EV3

Traditional motor.

IXP for horizontal installation



IVP-IXP for vertical installation



IVF for vertical installation





YARDY

Fan coils for ducted installation

Yardy fan coils are the simple solution for climate control in every season of the year, for cooling and dehumidifying in the summer and heating at the right temperature, in winter.

YARDY-ID2

Brushless Inverter Motor.

YARDY-DUCT2 and YARDY-HP

Traditional motor.



Immediate wellness

One click on the remote control and comfort is guaranteed within a few minutes because the advanced multi-function electronic command automatically controls the temperature, humidity and air speed, thereby favouring energy saving.



Custom accessories

A wide range of accessories satisfies every application requirement, the accessories are supplied separately or preset on the unit for faster on site installation.



Type of system

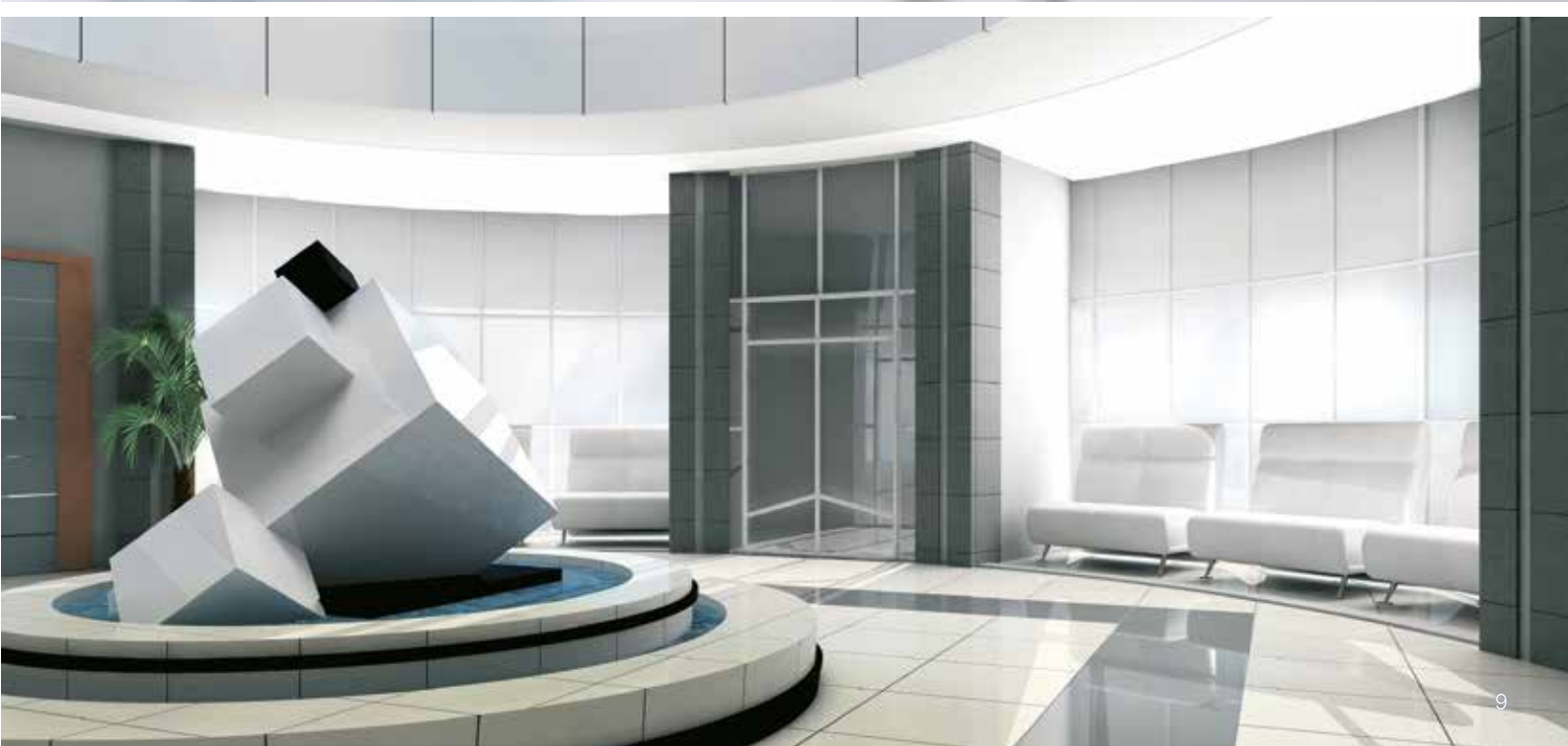
Yardy fan coils are available for 2-pipe systems, with a single coil and with an additional electrical resistance. Two options are available for 4-pipe systems: with a double finned coil, in alternating seasonal operation, or with a single mixed coil and 6-way valve assembly.

YARDY-ID2 and YARDY-DUCT2 for horizontal and vertical installation



YARDY-HP for horizontal and vertical installation





DIVA

False ceiling boxes

Silent and elegant, ideal for lofts and open-space and available with an elegant ABS frame, with a metal frame, coplanar to the false ceiling or with exposed casing.



Low consumption

The EC electronic motor compresses consumption to extremely low values and enables constant performance control with advanced logic based on actual room requirements, without any waste.



With touch control

The intuitive touch control makes the control unit extremely easy to use: the wall-mounted control panel responds immediately to the commands with a simple touch.



Panel LIT-Touch wall-mounted.



Remote control LIT-Touch and on board or wall mounting receiver.



Set ups

The box is available with a set up for 2-pipe, 4-pipe or 2-pipe with integrative electrical resistance systems and pre-assembled valves on request.



DIVA-I; DIVA-XLI;
DIVA-XLI SWING

Brushless Inverter Motor.

DIVA

Traditional motor.



DIVA-XLI
DIVA-XLI SWING



DIVA-I
DIVA



KIC - Casing for in view
installation.



PLM - Metal ceiling panelling with
Coanda effect.



IDROWALL

Wall-mounted fan coil

More floor space, thanks to the wall mounting and careful adjustment of the EC fan to always guarantee the best acoustic comfort and extreme silence.



Low consumption

The EC electronic motor compresses consumption to extremely low values and enables constant performance control with advanced logic based on actual room requirements, without any waste.



Full-optional version

Full-optional with an on board 3-way valve, remote control included and integrated master/slave control. The flush panel and the centralised panel, to manage up to 63 fan coils, provided separately as accessories.

IDROWALL-I



IDROWALL-I/V3



IDROWALL-I

- Master/slave management with flush panel
- Digital output for compulsory ON/OFF valve control
- Backlit temperature display

IDROWALL-I/V3

- Master/slave and centralised management with flush panel
- On-board 3-way diverter valve





Biocidal filtration

A new way to handle the air that we breathe every day indoors.

A new concept of biocidal filtration that allows for the removal of microbiological contamination without requiring additional solutions to be installed or existing systems to be modified.



Healthy environment

Living in a clean environment is a concept closely linked to breathing "clean air".

On average, each person inhales air 16,000 times a day, so breathing in a healthy environment allows for healthy living. But what does clean air mean? Healthy?

It means guaranteeing adequate thermo-hygrometric conditions, but mainly the absence of conditions that directly or indirectly affect our mental and physical state, such as odours

and pathogens. In other words, a high standard of IAQ (Indoor Air Quality).

Today, indoors, this need is threatened by the intensification of external pollution (promiscuity of production areas, vehicle traffic, etc.) and increased air recirculation in environments where energy saving is strategic and/or where there is no easy availability of primary air.





Vehicle traffic



Production facilities

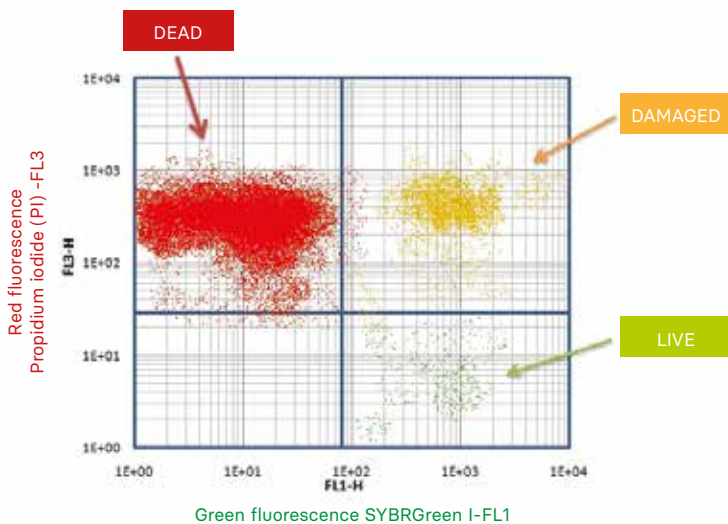


Biological contaminants



Unpleasant odours

- Inactivation of bioburden
- Minimum energy impact
- No additional maintenance
- Immediate retrofitting on existing systems
- Disposal without the risk of contamination



**Biological removal efficiency of
Air'Suite**

Biocidal filtration

Biocidal filtration refers to a combination of granular filtration (conventional) and inactivation of the bioburden (innovative) on the same amount of air which passes through the same filtration medium.

This process has been achieved by using a new, appropriately functionalised bio-polymer, characterised by:

- wide availability in nature;
- biocompatibility;
- non-toxicity;
- intrinsic infection preventing properties.

Research, development and certifications

The Air'Suite® filters were tested with new, state-of-the-art techniques that measure the actual biocide capacity on the filter surface and that do not make use of cultures but count each organism/cell and its integrity or ability to reproduce.

The bacteria removal efficiency was then measured through a study protocol with IRSA-CNR certified flow cytometry techniques on a sample of the contaminated filter.

The resulting efficiencies exceed 50% of "instant" removal and 100% within 30 hours after contamination.

The **ideal environment** for installing Air'Suite®



Hospitals, clinics,
nursing homes,
outpatient clinic
waiting rooms



Offices, meeting
rooms and
conference
rooms



Cinemas,
theatres,
shopping
centres

Available types of filters

For fan coils

The flat Air'Suite® is a filter with filtering grade G2, pursuant to EN 779:2012 ISO Coarse 40% pursuant to EN ISO16890; it is available as an accessory for Yardy, Yardy-I, YardyDuct, Yardy-ID, and Yardy HP range versions with a cabinet, recessed and ductable (MVP-MXP-IVP-IVF-IXP-CXP).

Air'Suite® is supplied as an accessory already fitted in the unit or separately. In this case, the standard filter must simply be replaced.

Alternatively, duct installations are provided with a frame and filter that can be removed in any direction.



Restaurants,
bars, hotels



Hot baths,
spas, swimming
pools, gyms



Schools,
universities

Controls for Brio-I Slim fan coils

SLIM-Touch

Ideal climate
with a simple touch



The electronic control with touch interface can provide the right conditions at any time of the day, particularly during the night as there is a super-minimum speed to guarantee the appropriate level of acoustic comfort for sleep.

The elegant and slim touch interface is available for wall mounting installation or on-board unit mounting.



Master/slave function

31 units in total
Maximum distance: 100m





Controls for Yardy fan coils
and Diva cassette fan coils

LIT-Touch

New
user experience



LIT Touch is the new Rhoss control platform for Yardy fan coils and Diva cassette fan coils, completely renewed and developed with the aim of improving the user experience.

Touch interface

The true core of the platform is the new LIT-Touch panel for wall-mounted installation, with capacitive touch technology and LED display.

With a very intuitive interface it adapts to every interior decoration requirement thanks to the two colour options: glossy black or pearl white.

The platform also includes the IR receiver with a room temperature probe for wall mounting and remote control, for ceiling or false ceiling units.

Master/slave function

15 units in total
Maximum distance: 100m





Intuitive control

The control allows the desired temperature to be managed together with the fan speed, the winter-summer change-over or automatic season setting, and the display of the room temperature.

A number of integrated functions are required - such as the master control of multiple slave units - digital inputs and outputs such as window contact, hot/cold call, alarm signal and optional serial interface.



Management, control and monitoring systems

SYS-TO System Touch Manager & Web APP

Integrated system
management

Tax incentives*



System Touch Manager offers a simple and effective interface to control and program the climate of the individual rooms of a building, manage the main system components, the environment terminals and display energy consumption from a single point.



Villas,
residences



Hotels,
restaurants,
B&B



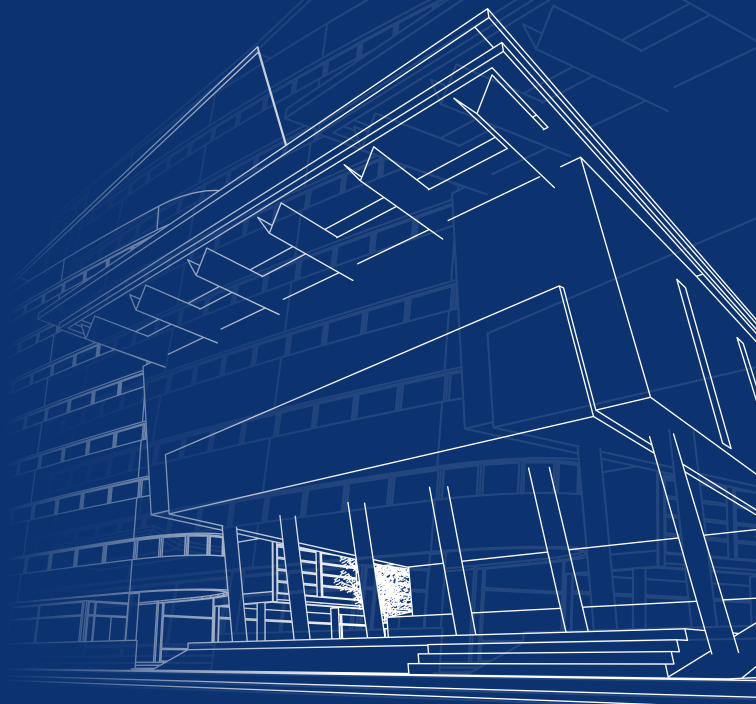
Offices,
professional
offices



Medical offices,
clinics



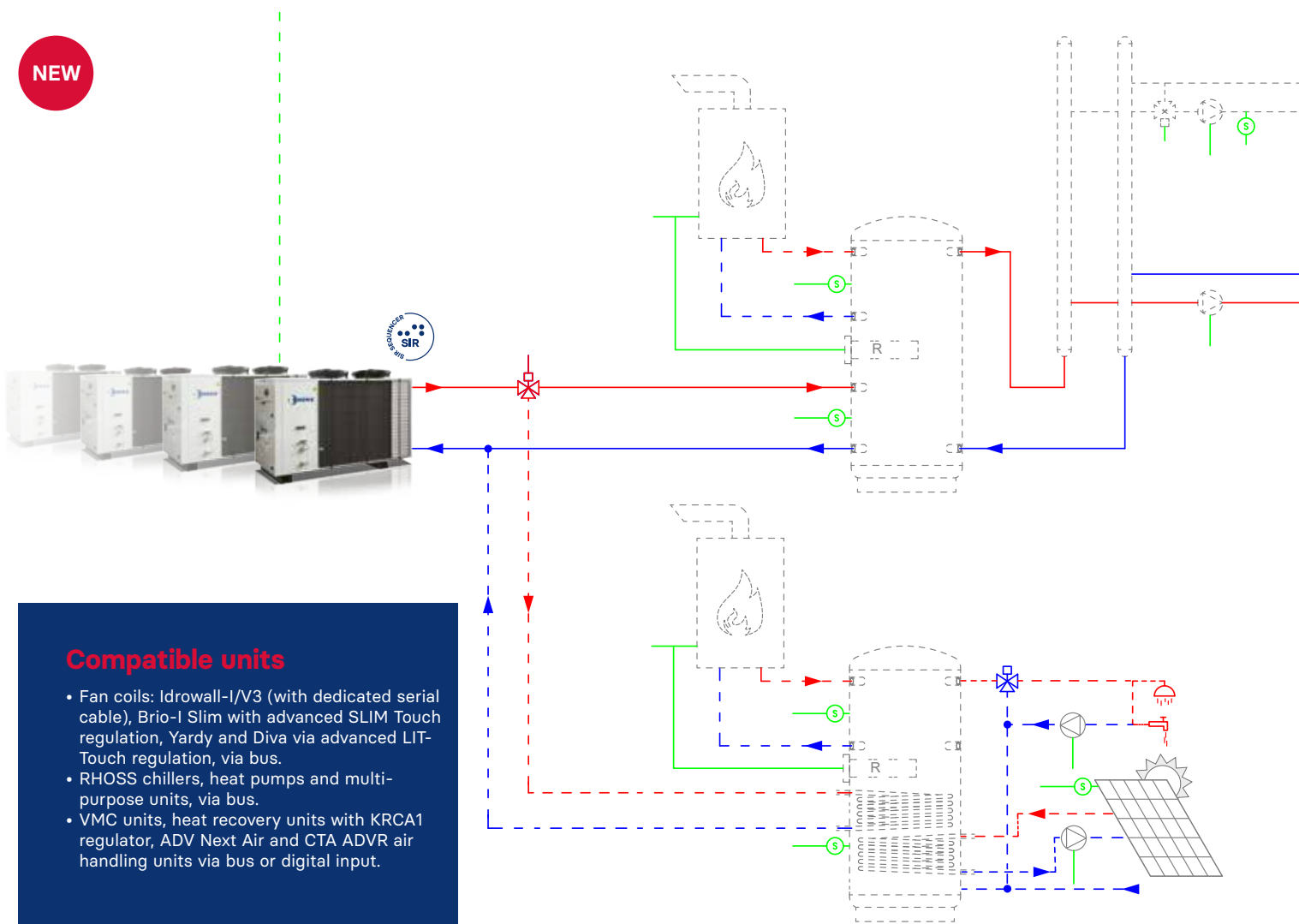
Shops, gyms,
multi-purpose
centres



The system offers a series of energy-saving functions for the management of generators, the production of domestic hot water, the distribution network and the terminal units such as the option to program up to 10 summer weekly time bands, system side and DHW side, at 2 temperature levels.

It is also possible to manage via the local network and remote monitoring via the web.





Compatible units

- Fan coils: Idrowall-I/V3 (with dedicated serial cable), Brio-I Slim with advanced SLIM Touch regulation, Yardy and Diva via advanced LIT-Touch regulation, via bus.
- RHOS chillers, heat pumps and multi-purpose units, via bus.
- VMC units, heat recovery units with KRCA1 regulator, ADV Next Air and CTA ADVR air handling units via bus or digital input.

System management

SYS-TO allows for integrated management of the following components in 2-pipe systems and 2-pipe systems with domestic hot water (DHW) production:

Generators

- Rhoss heat pump/chiller or multi-purpose system
- Inertial buffer tank temperature probes on the system side
- Technical tank temperature probes for DHW production
- Supplementary heat source - electrical resistance - or auxiliary - boiler.
- Circulation pump and temperature probe of the solar panel circuit
- Diverter valve for DHW
- Outdoor air temperature probe for climatic compensation or seasonal switching

Distribution network

- Area circulation pumps, for primary or primary/secondary circuit, direct or mixed, at low temperature (up to 5)

System terminals

- Control up to 64 fan coils or terminals with on-board regulation in serial connection, possibility of activating other devices in parallel with the fan coil (radiant panels in heating mode or radiators)
- Fresh air enable for VMC, Heat recovery units and Air handling units (up to 5)

SYS-TO in 4-pipe systems allows system terminals and area pumps to be managed.

Other managed devices

Electricity consumption meter.

The electricity meters enable to measure the instantaneous consumption and the daily, weekly and monthly kWh consumed by the monitored units.

In the presence of a photovoltaic system, they can measure energy production and maximise self-consumption, transforming overproduced electricity into thermal energy.

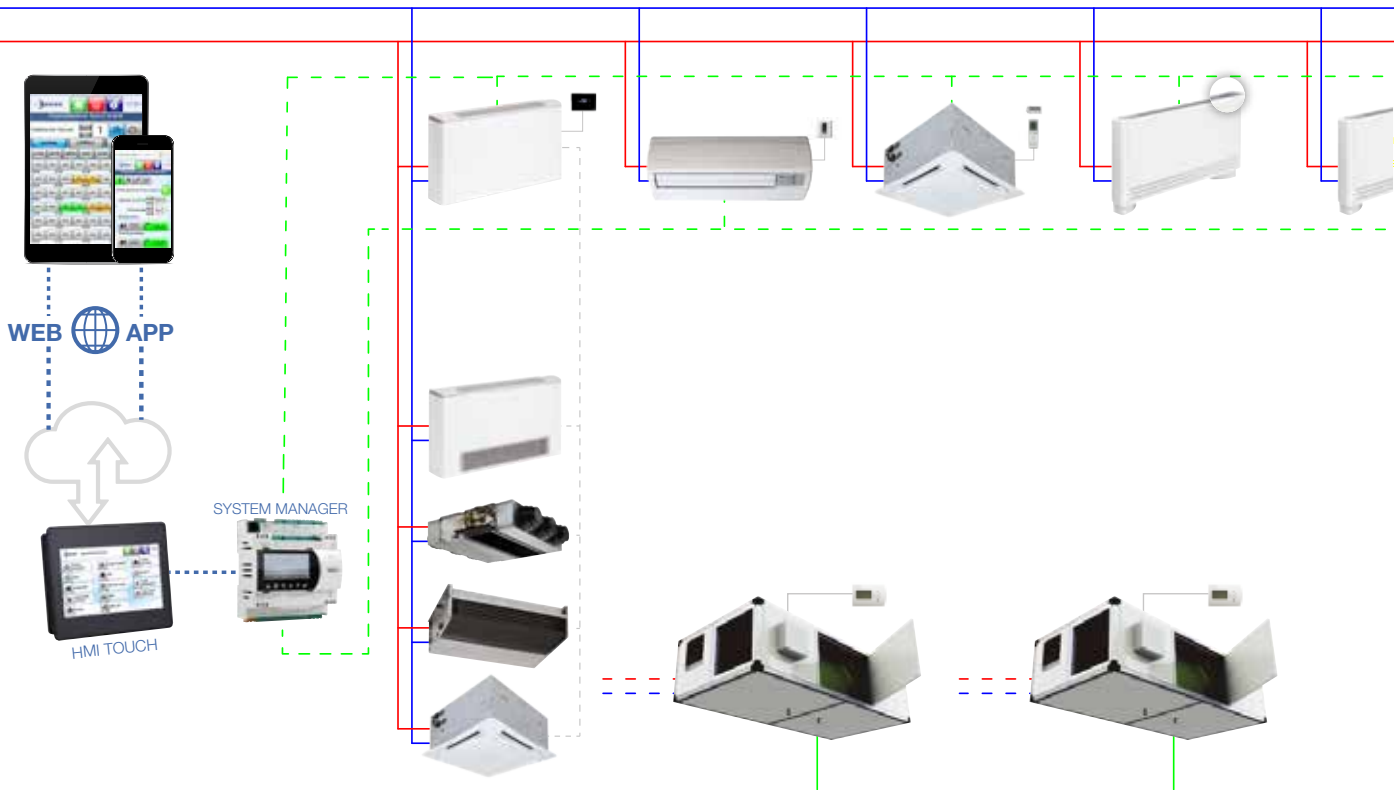
SYS-TO devices belong to class B according to EN-15232.

Serial network with simplified routing

An RS485 ModBus RTU serial interface is required on each connected device for connection via bus. Configuring serial addresses is extremely easy; it does not require additional devices but can be done directly from the control keypad of each fan coil.

Master/slave management

It is possible to connect multiple slave units with the same ambient set-point for each Master fan coil equipped with a control or receiver.



User interfaces and remote control via WEB

SYS-TO consists of a regulator (System Manager) to control room terminals (connected in serial mode) and to manage components in the field (through digital inputs and outputs) and from a user interface (HMI) available in various types.

The simplest interface consists of a semi-graphical LCD integrated in the regulator, to which a remote keypad with a backlit semi-graphical LCD display can be added.

The Touch Colour interface consists of a resistive touch screen with a 7" TFT 16:9 -64 K colour wall-mounted recessed display, it provides a clean and innovative design and a lively and intuitive interface, complete with an Ethernet interface and USB port.

The Touch Panel with integrated web-server is available with the Web APP option for remote control and monitoring through any Web browser with HTML5 support.

Solution with:	Integrated semi-graphical interface	Remotable semi-graphical interface	Touch colour interface	Touch colour interface and Web APP
Web APP				
HMI				
System Manager				

Comfort in the air

Rhoss fan coils, due to their **versatility**, are widely used in a variety of destinations, such as offices, hotels, residences, hospitals, schools, commercial buildings, etc.

Products that offer precise temperature control, ensuring **optimal comfort** in any season and in any environment.

An **energy efficiency** that makes them ideal for reducing consumption and a **design** that allows for harmonious integration with the most diverse environments.



The smart
choice
for comfort
everywhere.

Schools & Education

Airports

Hospital & Medical

Residential & Multifamily

Office Building

Hotels & Hospitality

Shopping Mall





New air for the future.

RHOSS S.P.A.

Via Oltre Ferrovia, 32
33033 Codroipo (UD) - Italy
tel. +39 0432 911611
rhoss@rhoss.com

Italy Sales Departments

Via Oltre Ferrovia 32
33033 Codroipo (UD)
tel. +39 0432 911611

RHOSS France

39 Chemin des Peupliers
69570 Dardilly - France
tel. +33 (0)4 81 65 14 06
rhossfr@rhoss.com

RHOSS Deutschland GmbH

Hölzlestraße 23, D
72336 Balingen, OT Engstlatt - Germany
tel. +49 (0)7433 260270
rhossde@rhoss.com

RHOSS Iberica Climatizacion, S.L.

Frederic Mompou, 3 - Pta. 6ª Dpcho. B 1
08960 Sant Just Desvern – Barcelona
tel. +34 691 498 827
rhossiberica@rhossiberica.com

rhoss.com

